

**BABAJIDE AKEREDOLU**

**English 352-H02**

**Dr. James Lipuma**

**Sunday, March 11, 2007**

**Process Description**

**PROTOWALL**  
**INSTALLATION**  
**A STEP BY STEP GUIDE**

# TABLE OF CONTENTS

Page

- INTRODUCTION..... 0
  - Overview
  - Assumption
  - Software Description
- SYSTEM REQUIREMENTS..... 2
  - Minimum System Requirements
  - Recommended System Requirements
- WARNINGS.....2
  - Compatibility
- How to Install Protowall..... 3
  - Before you Begin..... 3
  - Installation..... 3
  - Troubleshooting..... 9
  - Helpline..... 9

## **INTRODUCTION**

### **Overview:**

This process description explains how to install Protowall for Microsoft Windows XP Operating system. Protowall is an IP blocker developed by Blue Tack to create a secure atmosphere for file sharers who are greatly exposed to hackers and ads from numerous sources.

### **Assumption:**

- This process description is meant for people with moderate computer skills and a regular file sharer or downloader.
- The user must be running Microsoft Windows 2000 or XP

### **Software Description:**

When you use the internet, your computer sends and receives data as of packets. These packets contain information such as your name, IP address, Location and Internet Service provider which could be manipulated to gain access to your computer and also Identity theft. Protowall is a free, licensed software used to prevent unauthorized access to these vital information sent by your computer via the internet. It is a lightweight IP blocker that runs in the background of your computer system, using little memory but doing the important task of filtering IP packets by blocking unsolicited addresses. This is made possible through a database supplied with the software with all the known unsolicited IP addresses and it is automatically updated to ensure you are completely safe.

## **SYSTEM REQUIRMENTS**

### **Minimum System Requirements:**

Microsoft windows XP  
200MHz Processor  
40Mb Hard Disk space  
20Mb Ram  
Dial-up internet connection

### **Recommended System Requirements:**

Microsoft Windows XP SP2  
1 GHz Processor  
10 GB Hard Disk Space  
125mb RAM  
Broadband/Cable connection

## **WARNINGS**

Protowall has been known to disrupt internet connection on certain types of network cards, if your card happens to be part of the list, a firmware<sup>1</sup> update or rollback to an older version of its driver is necessary for optimum use of the software. Also, it is important that you read step 7 in the process description and strictly adhere to the guidelines given to avoid malfunction of your network adapter.

- **Compatibility:**

Below is a list of supported and unsupported Network cards to be used with Protowall:

**Supported:**

CNet PRO200WL PCI Fast Ethernet Adapter  
Linksys NC100 Fast Ethernet Adapter

**Supported with exceptions:**

Realtek chipset rtl8139c (17168q1) 129b  
Realtek NICs (8139 family)

**Un-supported:**

SiS 900-Based PCI Fast Ethernet Adapter  
D-Link DFE-530TX+  
Realtek 8100B chip controller

**Important**

- ✓ If your card is unsupported, please read the troubleshooting page for help.
- ✓ <sup>1</sup>Firmware: firmware is software that is embedded in a hardware device which keeps it running and compatible with your computer



## How to install Protowall for MICROSOFT WINDOWS XP

### 1 BEFORE YOU BEGIN

**Make sure you have the latest version of Protowall downloaded. This is Protowall v2.01 build 7.**

If not, you have to download the executable file, through this link <http://www.filessharingplace.com/downloads/protowall.php> .

Your download should have the name *ProtoWallInstaller7.exe*

### 2 INSTALLATION

1. Once the file ProtoWallInstaller7.exe has been successfully downloaded, you need to open the file to begin installation. This is done by locating the directory in which the file was downloaded and double clicking the icon.
2. With its new security features, windows XP owners should expect to see a security warning window popup as shown in figure1. The reason this shows is that Protowall developer Blue-tack excluded publisher information because Protowall is an open source software that is always being improved on by different people all over the world

Click “run” to continue installation.



Figure1: security system popup

3. The next window to appear (figure2) is the license agreement window which contains the terms under which an end user may utilize the licensed software. Read through the text by using the scroll bar on the right and if you agree completely with the terms listed, click the “I Agree” button.

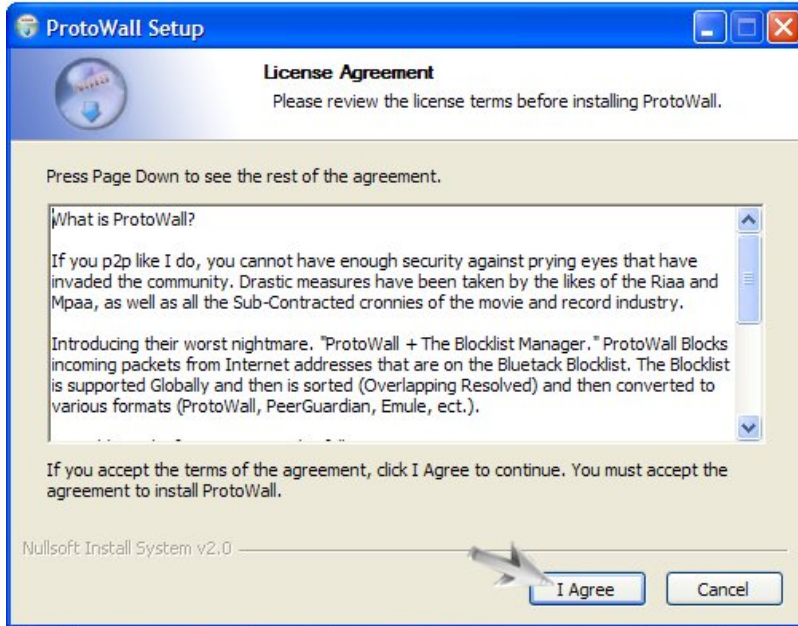


Figure2: License agreement confirmation

4. The next screen is the install location screen which specifies the directory where the installation files used to run the program are stored. Advanced users can choose to pick another folder but it is advisable to use the default destination folder shown on the screen as shown in figure3.

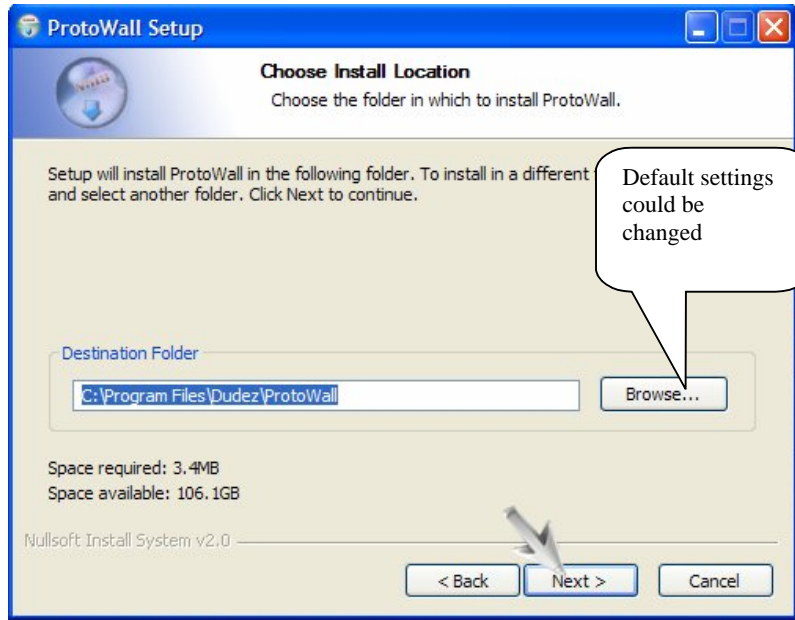


Figure3: Installation file location

5. This is the start menu folder screen (figure4) which should also be left using the default name. Create a shortcut on your desktop for the ease of accessibility by leaving the box “Do not create shortcuts” located right below the selection screen unchecked. Proceed by clicking next

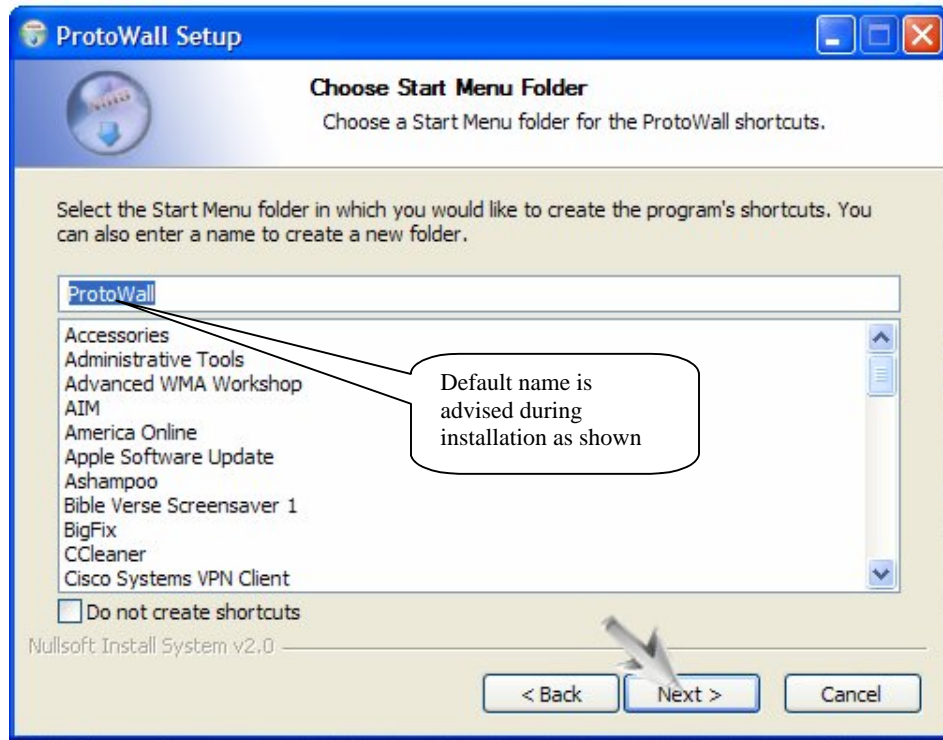


Figure4: start menu folder name option

Click next

6. This is the final window before installation can commence (figure5). This window gives you the option of manually or automatically configuring the Protowall driver on your network card. Most cards do not cause errors after installation but a few listed in the warnings section are susceptible to such errors and will require a manual configuration which can be found on this website <http://www.bluetack.co.uk/pwhelp/>.

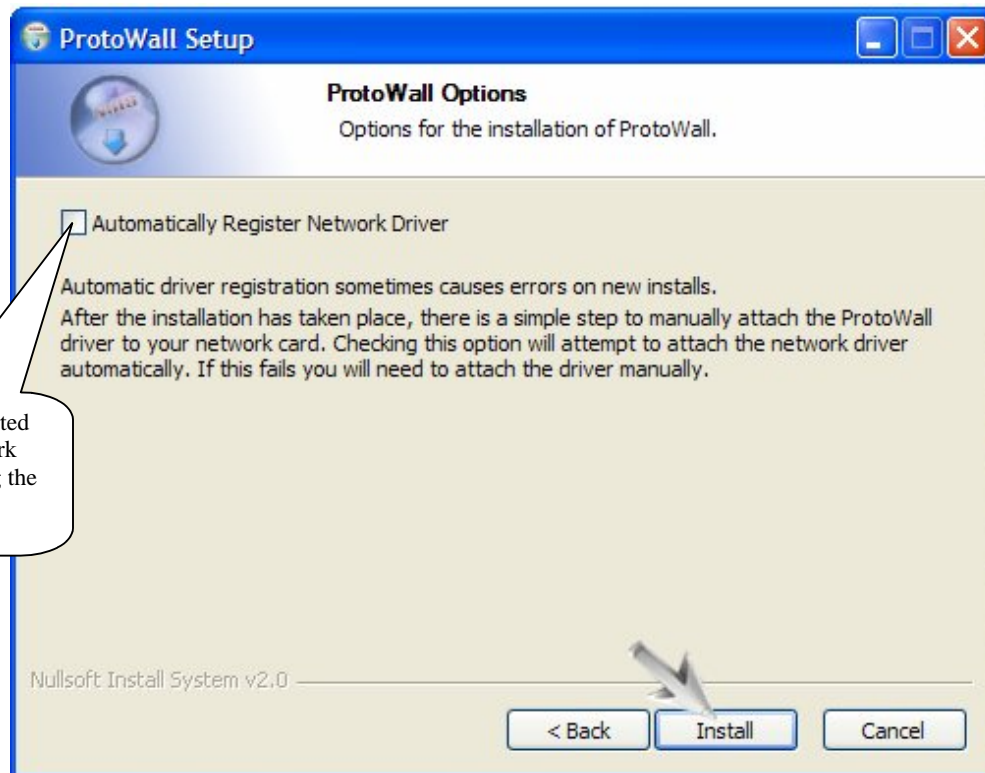


Figure5: Network Driver installation

### Important

Protowall has been known to damage Network cards due to incompatibility issues. If your Network card falls in the group of unsupported cards as listed in the warnings section, do not check the box as mentioned in the step below and skip to install.

7. Check the box and click install. During driver installation, MS-DOS blank screens will be noticed. These screens are automatically generated by your operating system and are to be ignored.

### Important

During installation, a warning window will appear stating that the software is incompatible with Windows XP. This is another safety feature as seen in step 2 expected to appear because of the lack of a publisher. Ignore this message and click "Continue

anyway”. It is expected to appear more than twice depending on the operating system version but you continue to click the “continue anyway” button.

8. After the installation is complete, click the “close” button and restart your computer for the configuration to be complete

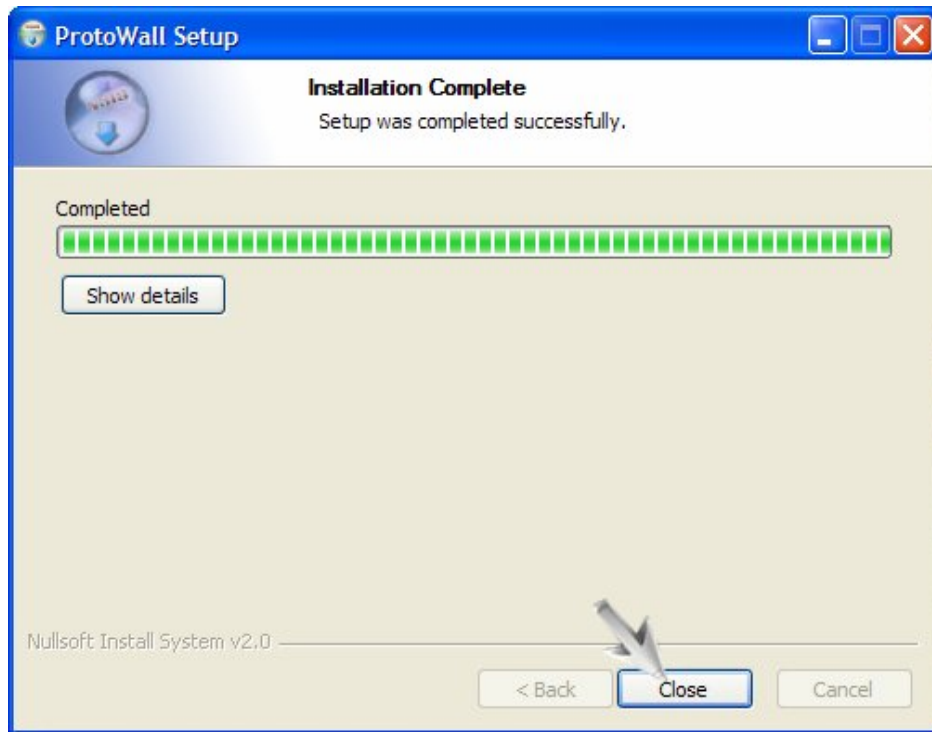
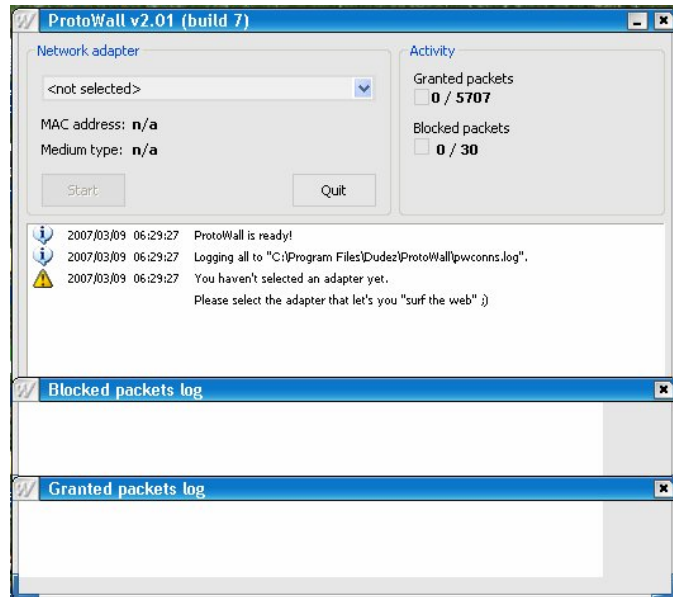


Figure6:Installation completion

9. The final result will be the Protowall user interface as shown in figure7 and this could be accessed by accessing your *start* menu located on your windows screen, clicking on *All programs*, and viewing the *Protowall* folder to access the executable file. It can also be accessed from your desktop.

Figure7: Protowall GUI



## TROUBLESHOOTING

### *My is connection slow with Protowall*

As stated in the warning section, Protowall has been known to have problems with some Network adapters.

Mainly Realtek Network cards are highly susceptible to slow speeds and the best solution to solve the problem is to download a patch from the link given on the Protowall website or download the latest patch from <http://www.realtek.com.tx/downloads/>

### *Protowall does not load*

This could be due to installation problems; uninstall Protowall and reinstall the software. If this fails to fix the issue, downloading an older version of the software with less bugs and more compatibility is advised.

This is beyond the process. You need to give troubleshooting and assistance for the things related to your process, not Protowall.



## HELP LINE

For more information and help on installing Protowall, visit Blue tack's official

website for up to date information and 24hr chat service.

Protowall support forum:

<http://www.bluetack.co.uk/forums/index.php?showforum=127>

<http://www.bluetack.co.uk/forums/index.php?showforum=19>