

# Lecture 9(+10)

Physics 106  
Spring 2006

## Gravitation

HW&R

<http://web.njit.edu/~sirenko/>

# Gravitation



The Andromeda galaxy. Located  $2.3 \cdot 10^6$  light-years from us

- On Earth: the Earth gravitation dominates  
( $F = mg$ )

$$F = G \frac{m_1 m_2}{r^2}$$

- In the Solar System: attraction to the Sun is the main effect

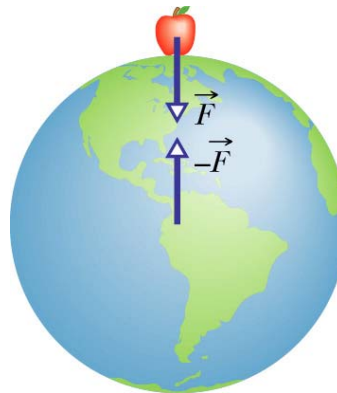
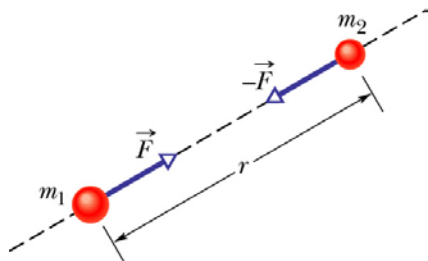
- In the Galaxy (Milky Way): Attraction to the center of the Galaxy determines everything.

- At the edge of the Universe: the conceptual problems begin ... Accelerating expansion of the visible Universe is known since 1998. From that time this problem became one of the frontiers of the modern Physics

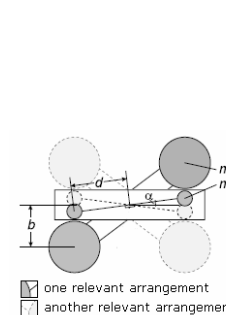
## Newton's Law of Gravitation (known since 1665)

$$F = G \frac{m_1 m_2}{r^2}$$

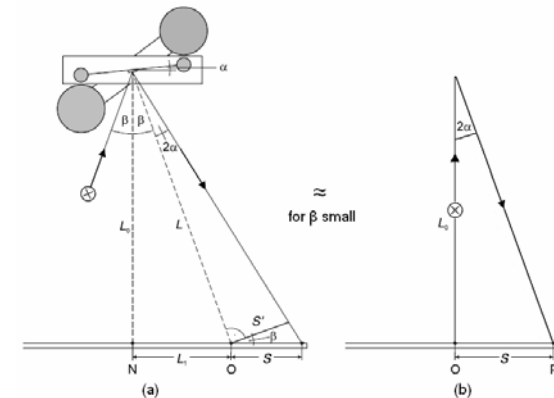
$$G = 6.67 \times 10^{-11} \text{ N} \cdot \text{m}^2 / \text{kg}^2$$



## Measuring the Gravitational constant G using the Cavendish method

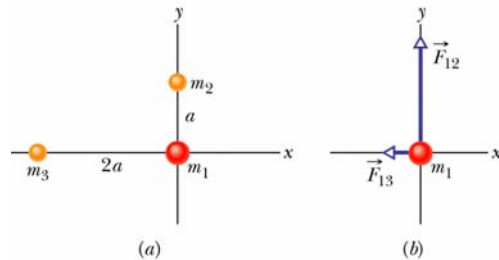


one relevant arrangement  
another relevant arrangement



$$G = 6.67 \times 10^{-11} \text{ N} \cdot \text{m}^2 / \text{kg}^2$$

# QZ9:



$$F = G \frac{m_1 m_2}{r^2}$$

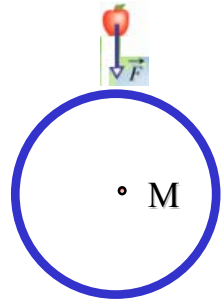
$$G = 6.67 \times 10^{-11} \text{ N} \cdot \text{m}^2 / \text{kg}^2$$

## Sample Problem from HW&R:

$m_1 = 6 \text{ kg}$ ,  $m_2 = m_3 = 4 \text{ kg}$ ,  $d_{12} = a$ , and  $d_{13} = 2a$ . What is the net gravitational force  $F_1$  that acts on the particle "1" due to the other particles? Use  $a = 0.1 \text{ m}$ .

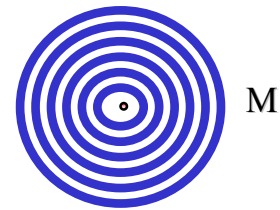
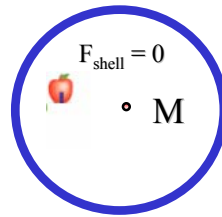
# Newton's Law of Gravitation

$$F = G \frac{m_1 m_2}{r^2}$$



A uniform spherical shell of matter attracts a particles that is outside the shell as if all the shell's mass is concentrated at its center!

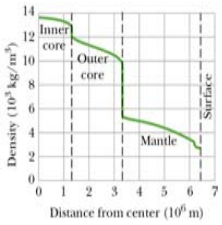
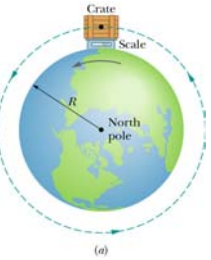
Solid sphere is a combination of spherical shells:



# Gravitation Near Earth's Surface

Gravitational acceleration:

$$F = G \frac{Mm}{r^2} = ma_g \Rightarrow a_g = \frac{GM}{r^2}$$

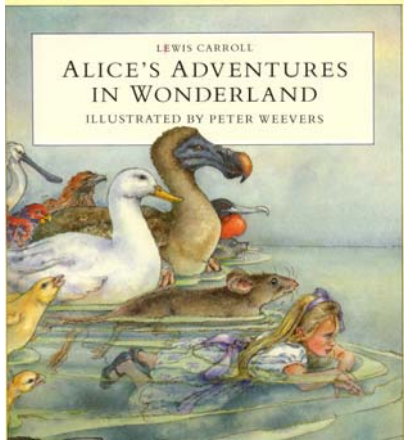


1. Earth is not uniform.
2. Earth is not a sphere.
3. Earth is rotating.



Mean Earth surface (0 km,  $9.83 \text{ m/s}^2$ ), Mt. Everest (8.8 km,  $9.80 \text{ m/s}^2$ ), highest manned balloon (36.6 km,  $9.71 \text{ m/s}^2$ ), Space Shuttle orbit (400 km,  $8.70 \text{ m/s}^2$ ), and communications satellite (35,700 km,  $0.225 \text{ m/s}^2$ )

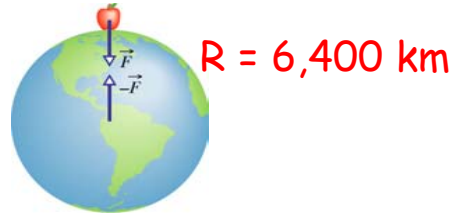
# Gravitation inside the Earth "Alice in Wonderland"



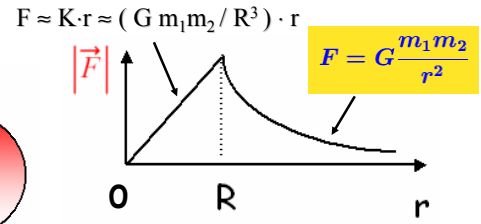
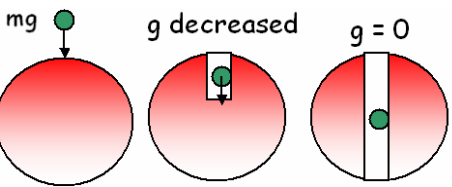
# Gravitation inside the Earth "Alice in Wonderland"

Outside the Earth  
( $r > R$ )

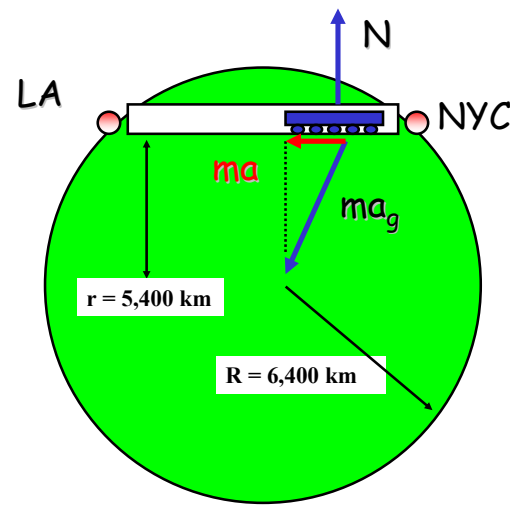
$$F = G \frac{m_1 m_2}{r^2}$$



$$a_g \approx g = 9.8 \text{ m/s}^2$$



# Gravitational Train "Alice"



- (a) Will this train move at all?
- (b) What is the total force on the train in the middle of the tunnel ?
- (c) Where will the train stop?  
LA or in the middle of the tunnel
- (c) What is the speed of the train in the middle of the tunnel ?

- Answers:
- (a)  $v \approx 6000 \text{ m/s}$
  - (b)  $v \approx 600 \text{ m/s}$
  - (c)  $v \approx 60 \text{ m/s}$
  - (d)  $v \approx 6 \text{ m/s}$
  - (e)  $v \approx 0$

**BOOK & BOOK SERIES SUBMISSION**  
PHYSICS, MATHEMATICS, COMPUTER SCIENCE & ASTRONOMY PMCA

**IN 1638, one of Galileo Galilei's finest works, DISCOURSES CONCERNING TWO NEW SCIENCES, appeared under the Elsevier logo. Galileo is considered to be one of the greatest scientists of the Renaissance who changed the course of scientific history.**

**Make history-publish your books with Elsevier**

THE BOOK PROGRAM  
Join the PMCA book program and line up with those great authors in your subject field. Since Galileo's Discourses, Elsevier published numerous titles from renowned scientists. We have a strong program with established series like Studies in Logic and The Foundations of Mathematics, with Mathematical Library, Advances in Image Communication and the ILL series in Applied Mathematics and Mechanics. More information on the titles and authors that represent the PMCA Portfolio can be found on the website <http://www.elsevier.com>.

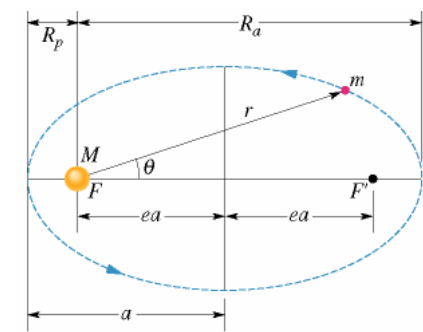
INVITATION  
Elsevier invites authors to submit proposals for books. Our Publishers are available to discuss your proposal.

HOW DOES ELSEVIER CURRENTLY MANAGE VOLUME 1 OF YOUR BOOK?  
• Your book will be published in one of our series under the editorship of an internationally renowned leader.  
• Your book is being seen not only as relevant publications to be reviewed.  
• Every title published electronically will be fully integrated with the world's largest electronic platform for scientific information, the more information, visit <http://www.elsevier.com>  
• We publish titles and marketing services to more than 100 countries, ensuring a worldwide audience.  
• For your book a promotional program to be place using social, direct mail, flyer and advertisement.  
• Your book will be represented at the appropriate conferences and exhibitions.

REMARKS  
• Elsevier's publishing staff is committed to providing the best support for its authors at every stage of the publishing process.  
• Elsevier authors receive a lifetime 10% discount on most Elsevier books.  
To submit a book proposal, please contact one of the Publishers listed at the reverse side.

# Planets and Satellites: Kepler's Laws

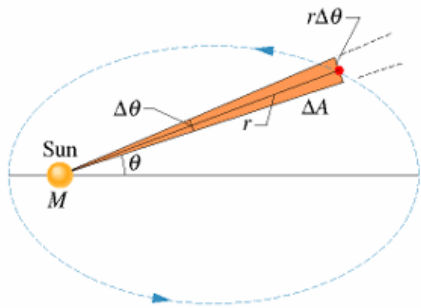
**THE LAW OF ORBITS: All planets move in elliptical orbits, with the Sun at one focus.**



A planet of mass  $m$  moving in an elliptical orbit around the Sun. The Sun, of mass  $M$ , is at one focus  $F$  of the ellipse. The other focus is  $F'$ , which is located in empty space. Each focus is a distance  $ea$  from the ellipse's center, with  $e$  being the eccentricity of the ellipse. The semimajor axis  $a$  of the ellipse, the **perihelion** (nearest the Sun) distance  $R_p$ , and the **aphelion** (farthest from the Sun) distance  $R_a$  are also shown.

# Planets and Satellites: Kepler's Laws

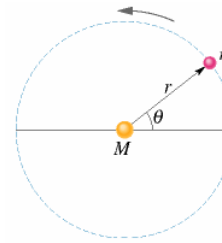
**THE LAW OF AREAS:** A line that connects a planet to the Sun sweeps out equal areas in the plane of the planet's orbit in equal times; that is, the rate  $dA/dt$  at which it sweeps out area  $A$  is constant.



In time  $\Delta t$ , the line  $r$  connecting the planet to the Sun (of mass  $M$ ) sweeps through an angle  $\Delta\theta$ , sweeping out an area  $\Delta A$  (shaded).

# Planets and Satellites: Kepler's Laws

**THE LAW OF PERIODS:** The square of the period of any planet is proportional to the cube of the semimajor axis of its orbit.



$$\frac{GMm}{r^2} = (m)(\omega^2 r).$$

$$T^2 = \left( \frac{4\pi^2}{GM} \right) r^3$$

Planet	Semimajor Axis $a$ ( $10^{10}$ m)	Period $T$ (y)	$T^2/a^3$ ( $10^{-34}$ $y^2/m^3$ )
Mercury	5.79	0.241	2.99
Venus	10.8	0.615	3.00
Earth	15.0	1.00	2.96
Mars	22.8	1.88	2.98
Jupiter	77.8	11.9	3.01
Saturn	143	29.5	2.98
Uranus	287	84.0	2.98
Neptune	450	165	2.99
Pluto	590	248	2.99

## Potential Energy :

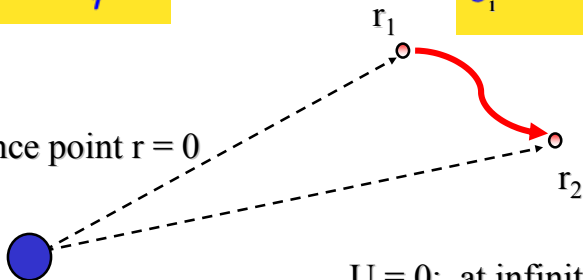
$\Delta U$  between  $r_1$  and  $r_2$  is the work done by the Gravitation Force during the move from  $r_1$  to  $r_2$  :

$$F = G \frac{m_1 m_2}{r^2}$$

$$U_1 = -\frac{GMm}{r_1}$$

$$U_2 = -\frac{GMm}{r_2}$$

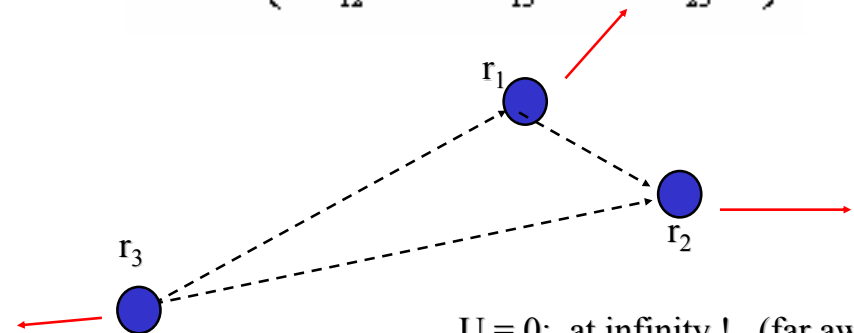
Reference point  $r = 0$



$U = 0$ ; at infinity ! (far away)

## Potential Energy of a System :

$$U = -\left( \frac{Gm_1 m_2}{r_{12}} + \frac{Gm_1 m_3}{r_{13}} + \frac{Gm_2 m_3}{r_{23}} \right).$$



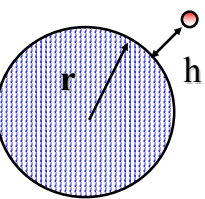
$U = 0$ ; at infinity ! (far away)

# Potential Energy :

Is it  $\Delta U = mgh$  or  $U = -\frac{GMm}{r}$ , anyway ?

It is the same thing, just different zero levels.

$U = -\frac{GMm}{r}$  is more universal (always correct)



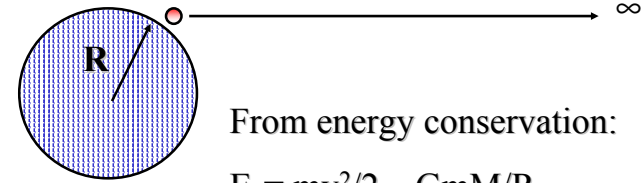
$\Delta U = mgh$  works for  $h \ll r$ , zero at the Earth surface

$U = -\frac{GMm}{r}$  always works, zero at  $\infty$

$$\Delta U = GMm/r - GMm/(r+h) = GMm(r+h-r)/(r \cdot (r+h)) = mh \cdot [GM/(r \cdot (r+h))] \approx mgh$$

# Escape Speed:

$$F = G \frac{m_1 m_2}{r^2}$$



From energy conservation:

$$E_1 = mv^2/2 - GmM/R$$

$$E_2 = 0 \text{ (velocity is small)}$$

$$v^2 = 2GM/R = 2gR$$

$$v = (2GM/R)^{1/2} \approx 11,200 \text{ m/s}$$

# First Satellite Speed:

$$F = G \frac{m_1 m_2}{r^2}$$

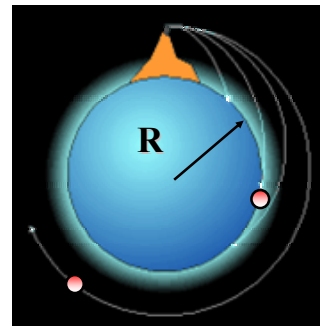
“Newton’s cannon”

in 1687 in “Principia Mathematica”

$$v_{\text{satellite}} \approx (gR)^{1/2}$$

$$v_{\text{satellite}} \approx 8,000 \text{ m/s}$$

$$g \approx 8.70 \text{ m/s}^2$$



An object in orbit is weightless not because 'it is beyond the earth's gravity' but because it is in 'free-fall' - just like a skydiver.

# Satellites: Orbits and Energy

Potential Energy

$$U = -\frac{GMm}{r}$$

$$\frac{GMm}{r^2} = m \frac{v^2}{r}$$

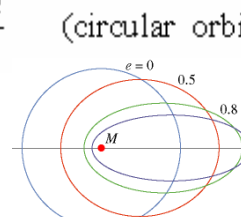
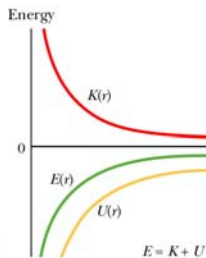
Kinetic Energy for the orbital motion

$$K = \frac{1}{2}mv^2 = \frac{GMm}{2r}$$

$$K = -\frac{U}{2} \text{ (circular orbit)}$$

$$\text{Total Energy: } E = K + U = \frac{GMm}{2r} - \frac{GMm}{r} = -\frac{GMm}{2r}$$

$$E = -\frac{GMm}{2a} \text{ (elliptical orbit) semimajor axis } a$$



# Potential and Kinetic Energy

Potential Energy

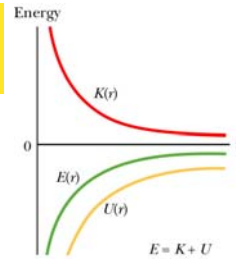
$$U = -\frac{GMm}{r}$$

Kinetic Energy for the orbital motion

$$F = G\frac{Mm}{r^2} = m\frac{v^2}{r} \Rightarrow K = \frac{1}{2}mv^2 = \frac{GMm}{2r}$$

Total Energy

$$E = K + U = \frac{GMm}{2r} - \frac{GMm}{r} = -\frac{GMm}{2r}$$



3/22/2006

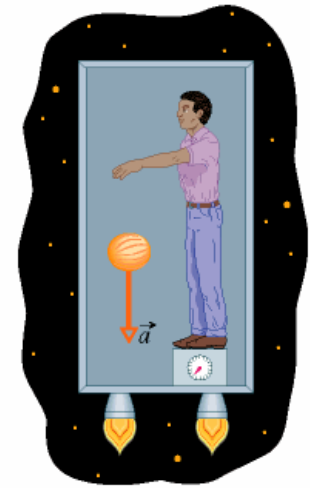
Andrei Sirenko, NJIT

21



(a)

3/22/2006



(b)

Andrei Sirenko, NJIT

22