

Tutorial for accessing OSL machines using Xwin

---By Yaojie Lu

yl333@njit.edu

1. To start the work below you need to connect your computer to the NJIT VPN first.

For information about VPN, go to ist.njit.edu and enter "VPN" in the upright "search ist" column and follow the instructions in the first two searching results. Install client based VPN and use your UCID and AFS password to connect to NJIT VPN.



2. Downloading Xwin.

Once you are connected to VPN, software in the following link are all available for download.

<http://ist.njit.edu/software/download.php>

Xwin is located at the bottom of this page

Xwin page

Windows XP Tablet PC Edition (Microsoft)		✓	✓
X-Win 32 9.4 (StarNet)		✓	✓

Go to the Xwin page and select "download" on the bottom right, also click "request product key" to obtain the license. You will be asked to fill out a few questions when you download and request key.

Minimum Requirements	
Computer/Processor	Pentium 4 or higher.
Memory	64 MB
Hard Disk	60 MB
Operating System	Windows 2000 SP3, Windows XP, Windows 2003, and Vista

- No

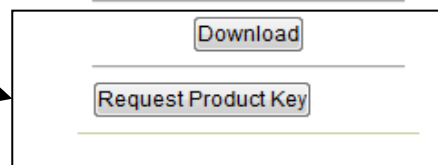
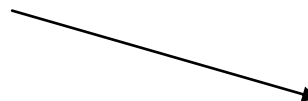
License Information: Licensed by NJIT.

Installation Instructions

Download Filesize(s):

- Download #1: 35.5 MB

Download and product key



The follow session will show up before you can continue with your download:

Software can be downloaded and installed on your local machine. Titles vary by platform, and license terms vary by vendor and depend on your role at the university (e.g. student, faculty, researcher or staff member). If downloading software while off-campus, you must use Virtual Private Network software (VPN). You also must have a valid UCID and UCID Password to download software licensed by NJIT.

I am

Department:

UCID:

UCID Password:

X-Win 32 9.4 (StarNet) - Download #1

Save the product key as you will need it later:

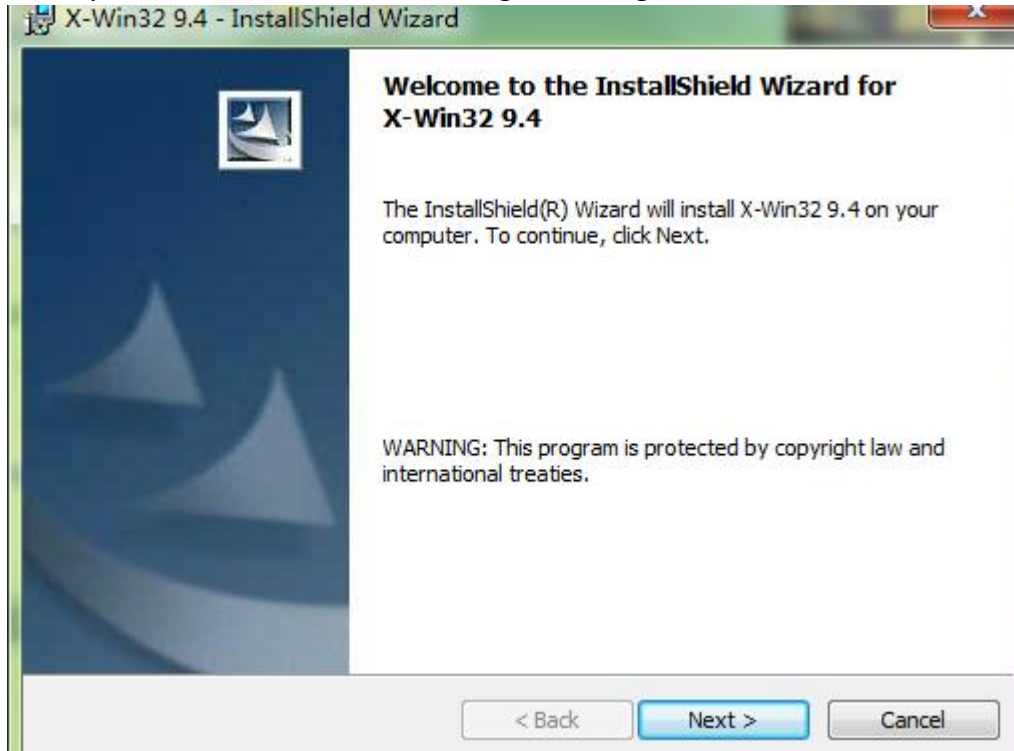
Your key is:

MIIC8gYJKoZIhvcNAQcCoIIC4zCCA8CAQExCzAJBgUrDgMCGGUAMIHGBgkqhkiG9w0BBwGg
 gbgEgbVTTJogMzQ2DQpOOiAxMDAwDQpQSUQ6IDEzDQpWZXI6IDE2Mg0KRGF0ZTogMjAxMCM0w
 Ny0yMw0KTmFzTogTkogSW5zdGI0dXRlIG9mIFRIY2hub2xvZ3kNCIN0YXR1czogYWN0aXZI
 DQpFeHA6IDIwMTMtMDctMzENCkxpdmU6IDAwMDAtMDAtMDANCk5ldDogMTI4LjIzNS4wLjAv
 MTYNck5ldDogMTkyLjc2LjAuMCM8xNg0KMYICAjCCAf4CAQEwgacwgaExCzAJBgNVBAYTAIVT
 MRMwEQYDVQQIEwpDYWxpZm9ybmlhMRlWEAyDVQgHEwITdW5ueXZhbGUxJTajBgNVBAoTHFN0
 YXJJOZlQgQ29tbXVuaWNhdGlvbnMgQ29ycC4xZzAVBgNVBA5TDkxpY2Vuc2UgU2VydMvyMSkw
 JwYJKoZIhvcNAQkBFhpsaWNlbnNlXNlcnZlckBzdGFyYmV0LmNvbQIBKjAJBgUrDgMCGGUAA
 oIGxMBGcSgSib3DQEJAzELBgkqhkiG9w0BBwEwHAYJKoZIhvcNAQkFMQ8XDTEwMDcyMzE5
 MDcxN1owIwYJKoZIhvcNAQkEMRYEFpmTxbVIBzIUQdmRHIAzLLoyamMIMFIGCSgSib3DQEJ
 DzFFMEMwCgYIKoZIhvcNAwcDgYIKoZIhvcNAwICAgCAMA0GCCqGSIb3DQMCAGFAMAcGBsO
 AwIHMA0GCCqGSIb3DQMCAGeOMA0GCsGSIb3DQEBAQUABIGA3FBCIdCT/Sq+8VATJmhP3jq5
 fehx9pMyIQLcdJ6fkNeK+OJE6SbQntT1f+GBSPZZSp6XaQbaNA/1CYNtyrag6v3W+0vVvgI5
 IWTGSQIFzI9t8aQdc/HU+sHjwSs/OdibLmczKuhEBInmYSFKo3s+MOS Tf89hwD3/6ScqVyr1 1U4=

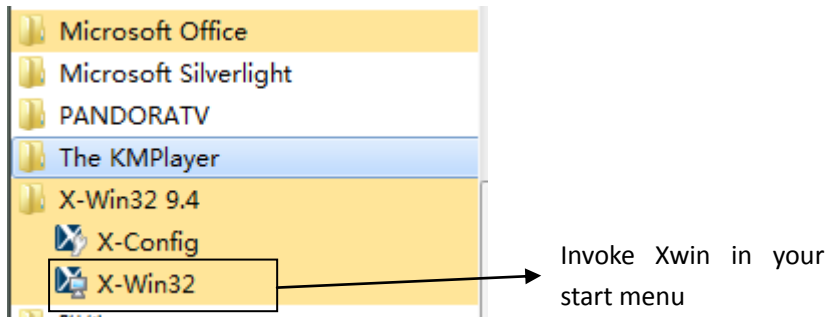
This key was generated in the past. If you have already used this key for an installation, you will need to contact the Helpdesk x2900 to request a new product key. If you have not yet used this key, then it is still a viable key.

3. Install Xwin and update it to the version that meet our course requirement.

Install your downloaded Xwin following the dialogue:



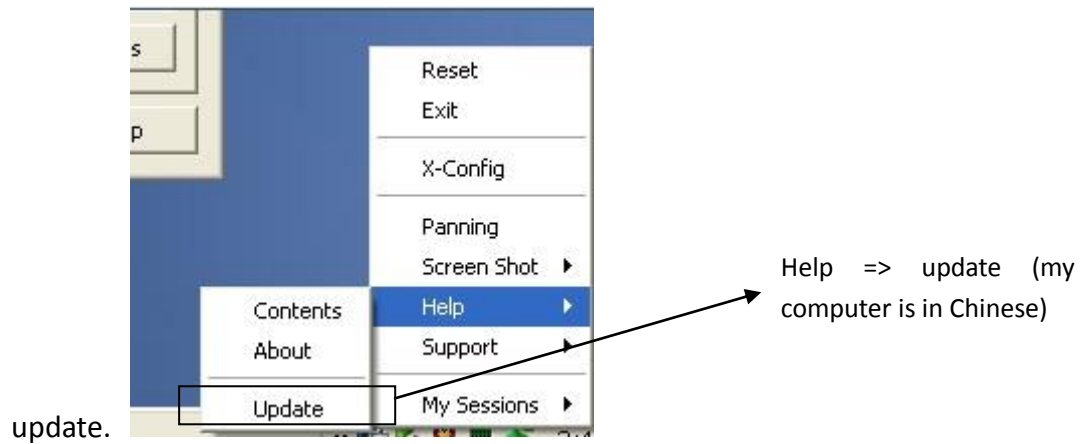
Once you are done with the installation, invoke Xwin32.



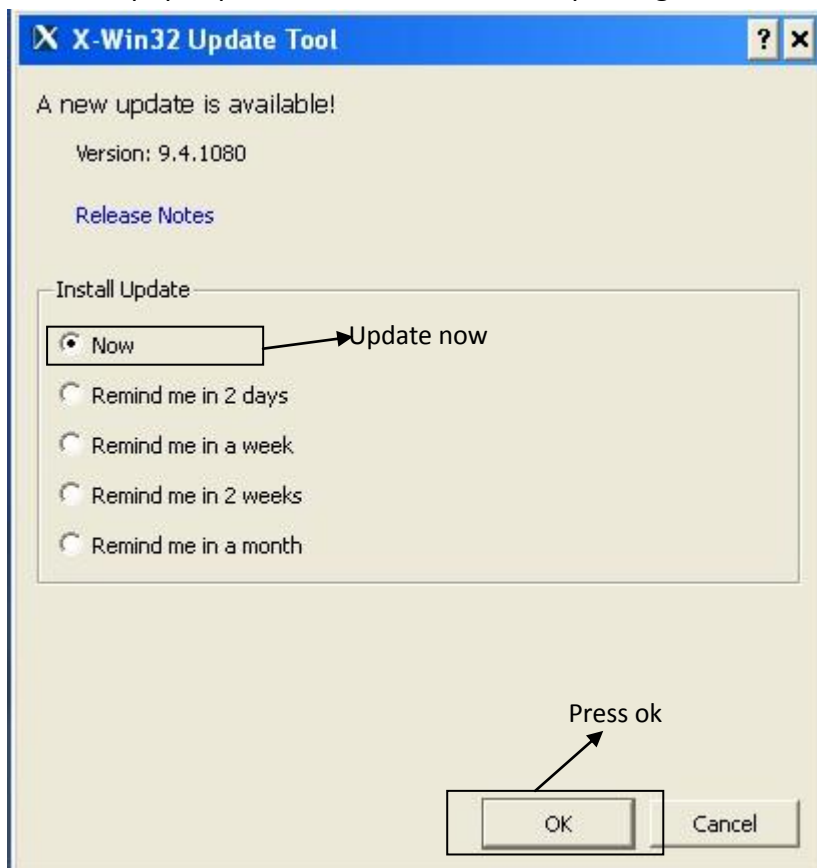
You will be asked to input the product key, simply copy and paste.

Then we will start to upgrade the Xwin:

Right click the Xwin icon in your task panel and move to "help", then choose

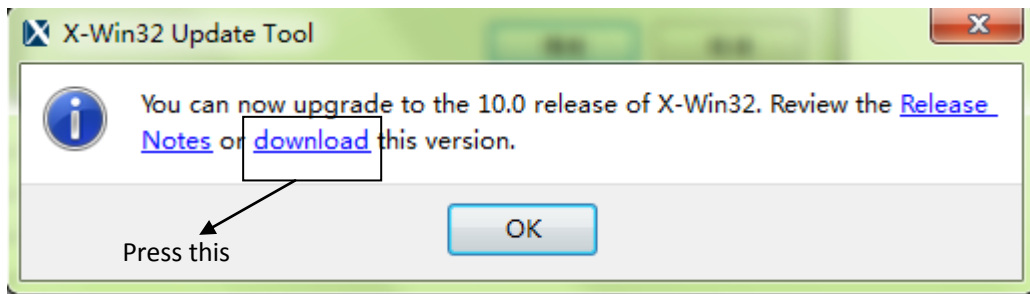


Choose "update now" and OK, then shut down the active Xwin when the reminder pops up, let the software do the updating.



We are not done with the update yet!

Invoke Xwin again and do the same thing in the previous update: go to “help” => “update”, and a window will pop up, click “download”



You will be led to a webpage for upgrade. You don't have to wait for the license, choose the option at the bottom to download an old version (which is adequate for our course)

A screenshot of a webpage titled "Upgrade Support" with a blue and black background featuring binary code. Below the header is a section titled "How to Upgrade Floating Licenses to X-Win32 2011". The text explains that the current license key is under maintenance and provides two options for users. Below the text is an email input field and three radio button options: "Request 2011 Floating License Activation Key", "Request Node-locked Licenses", and "I can't decide. Please send more information." A "Submit" button is located below the radio buttons. At the bottom of the page, there is a link that says "Click Here" with the text "If you would like to download the older version that will work with your license key" above it. An arrow points from the "Click Here" button to the text "Use this option" above it.

There will be three versions available in the next page, choose and download Xwin2010 with SSH.



Upgrade Support

Your license key is valid for the following products:

Download this version

- X-Win32 2010 build 1178 (with SSH)
- X-Win32 2010 build 1178 (no SSH)
- X-Win32 2010 build 1178 (with SSH) (MSI file, for administrators doing "push deployments" only)

Download

Show All Versions

In order to use the LIVE component of X-Win32, the LIVE server must be installed on the Unix/Linux system to which you are connecting. Download the LIVE server component [here](#).

Then type in "yes" in the next page and you can download the Xwin 2010 and install it.

Upgrade Support

Since this product uses encryption technology, it is subject to the United States Export Administration Regulations. It may not be downloaded or otherwise exported or reexported into any country that is restricted based on those regulations. You warrant that you are not located in, under the control of, or a national or resident of any such country.

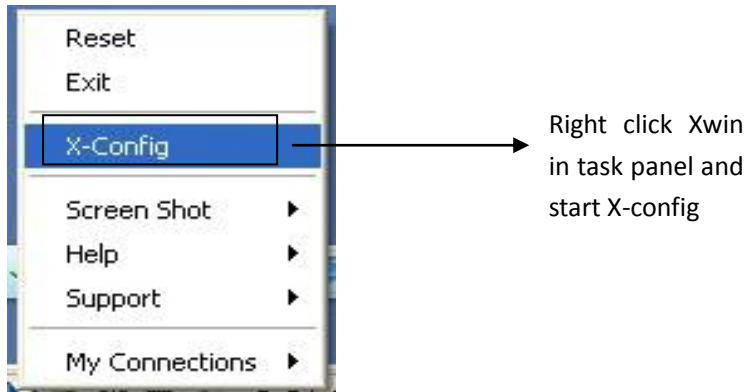
To indicate that you agree with, and will adhere to, the above statement, type "yes" in this box and click the "Download" button.

yes

Type yes and click download

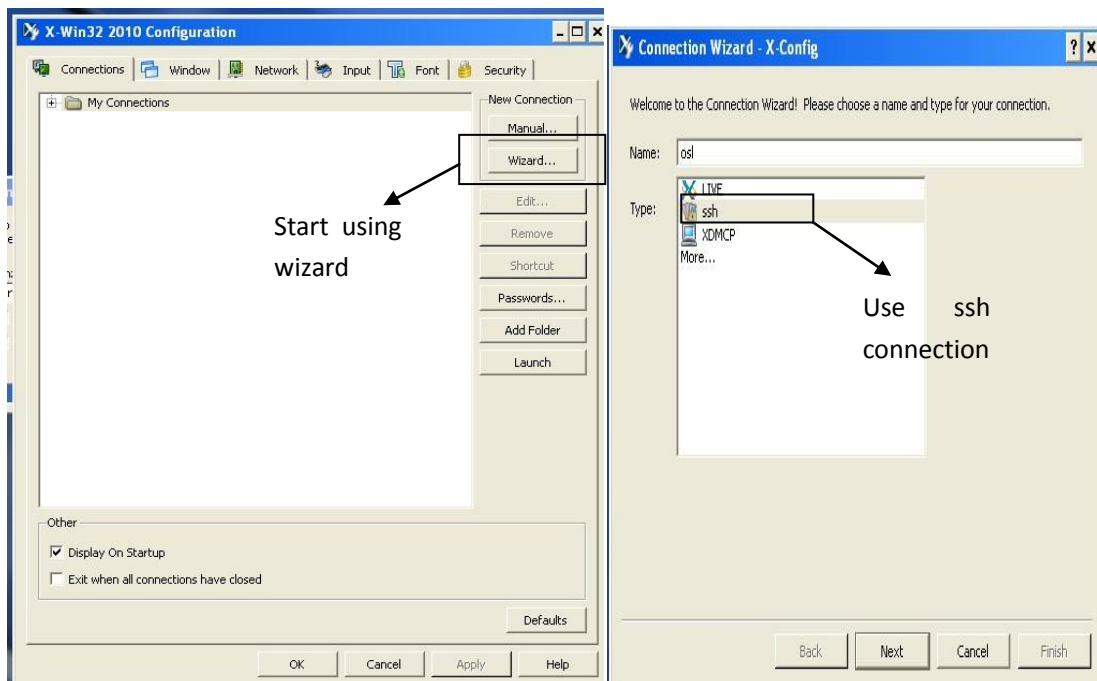
4. Set up the connection to osl machines in the X-Config.

Once you are done with the upgrade, invoke Xwin 2010 (not the old 9.4 version, actually you can uninstall that), and start the X-config in the task panel.



Right click Xwin in task panel and start X-config

Click Wizard and the window on the right will pop up. Choose SSH connection type and give a name to the connection (whatever you like), go to next step



Start using wizard

Use ssh connection

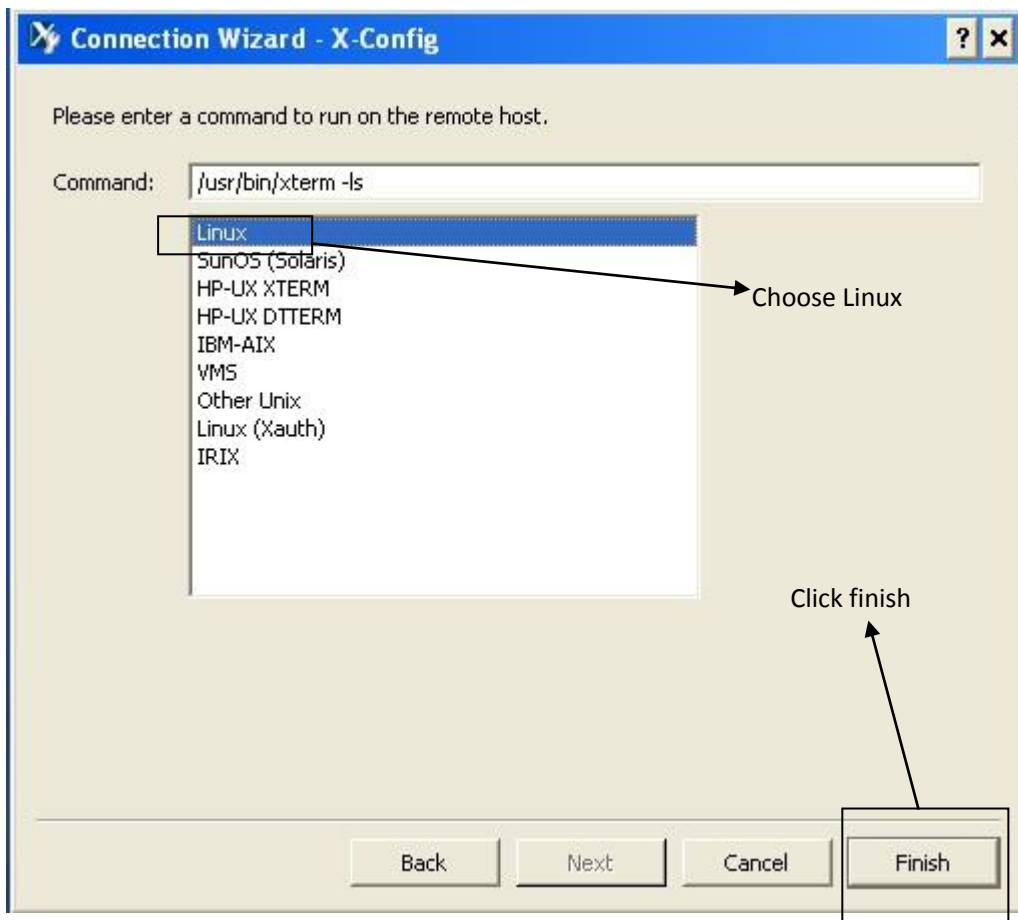
Input the host name in the next step, host name should be oslN.njit.edu, N can be any number between 1 to 30.



Input your ucid and afs password in the next step



In the next step, choose the type of system that you are connecting, choose Linux and click finish. The connection has been saved for your future use.



If you need more terminals to start different software, simply click the shortcut again. To work in the Linux system you need to get used to operating everything using commands. Here are a few basic commands for you to start with, further detail can be found by searching on the internet.

cd: for changing directory

mkdir: for creation folders

vi: for creating and editing files

ls: for listing all the files and folders in the current directory

rm: for deleting files or folders